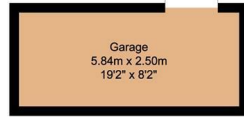
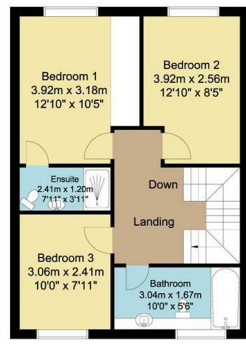
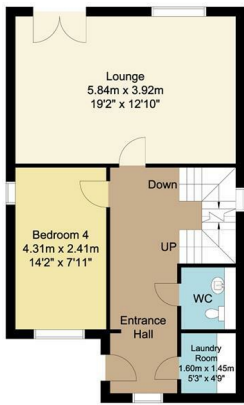
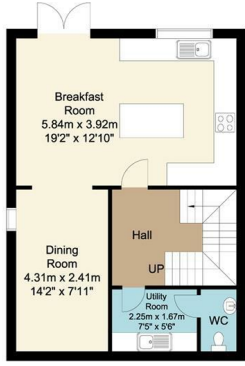


Lower Ground  
49 sq m/527.43 sq ft  
Approx.

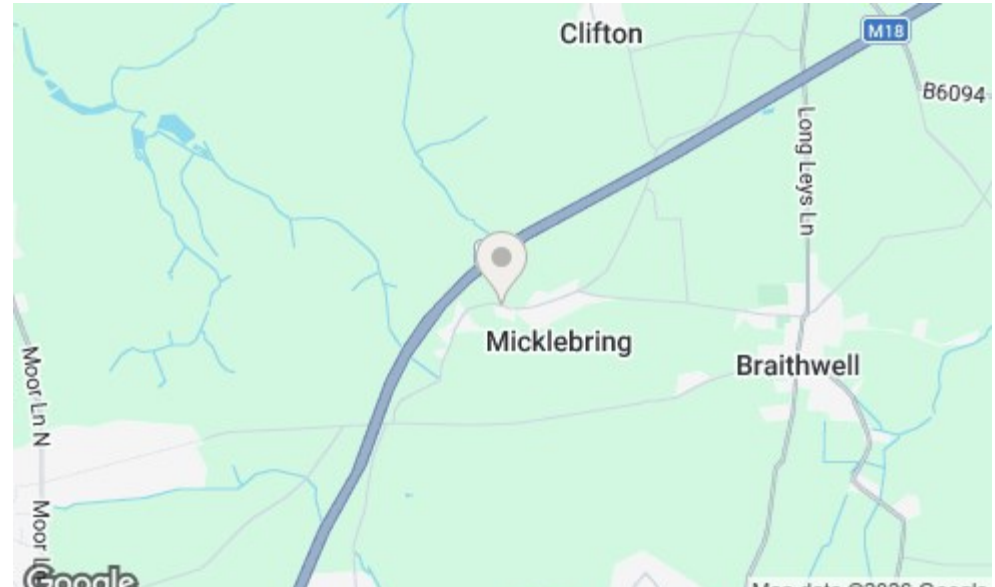
Upper Ground  
54 sq m/581.25 sq ft  
Approx.

First Floor  
49 sq m/527.43 sq ft  
Approx.

Outbuilding  
15 sq m/161.45 sq ft  
Approx.



Whilst every attempt has been made to ensure the accuracy of the floor plan contained here, no responsibility is taken for incorrect measurements of doors, windows, appliances and rooms or any error, omission or misstatement. Exterior and interior walls are drawn to scale based on interior measurements. Any figure given is for initial guidance only and should not be relied on as a basis of valuation. The plans are for marketing purposes only and should only be used as such. No guarantee is given on the accuracy of the total square footage/metreage if quoted on this plan.  
CP Property Services @2026



**Bakewell**  
3 Royal Oak Place  
Matlock Street  
Bakewell DE45 1HD  
T: 01629 700699  
E: bakewell@elr.co.uk

**Banner Cross**  
888 Ecclesall Road  
Banner Cross  
Sheffield S11 8TP  
T: 01142 683388  
E: bannercross@elr.co.uk

**Dore**  
33 Townhead Road  
Sheffield  
S17 3GD  
T: 0114 2362420  
E: dore@elr.co.uk

**Hathersage**  
Main Road, Hathersage  
Hope Valley  
Derbyshire S32 1BB  
T: 01433 651888  
E: peakdistrict@elr.co.uk

**Rotherham**  
149 Bawtry Road  
Wickersley  
Rotherham S66 2BW  
T: 01709 917676  
E: wickersley@elr.co.uk



4, Greaves Sike Lane, Rotherham, S66 7RR

Guide Price £300,000

# 4 Greaves Sike Lane, Micklebring, Rotherham, S66 7RR

**Description**  
Guide price £300000 to £325000  
Occupying an enviable position in the highly sought-after village of Micklebring, this beautifully presented four-bedroom detached family home offers spacious and versatile accommodation arranged over three floors, complemented by breath-taking far-reaching countryside views to the rear. Combining generous living space, modern conveniences and a superb semi-rural setting, this exceptional property is perfect for growing families seeking both comfort and connectivity.

Upon entering the property, a welcoming entrance hallway provides access to the principal accommodation on the upper ground floor. The impressive rear-facing lounge is a wonderful space to relax and entertain, enjoying elevated panoramic views across the surrounding countryside. Also located on this level is a versatile fourth bedroom, currently ideal as a guest room but equally suited as a home office or study. Completing the floor are a practical laundry room and a convenient WC.

Stairs lead down to the lower ground floor where the heart of the home awaits. The stunning breakfast kitchen has been thoughtfully designed to offer both style and functionality, featuring a range of integrated appliances, a central breakfast island and ample workspace. There is plenty of room for family dining, while French doors open directly onto the rear garden, seamlessly connecting indoor and outdoor living. An additional dining room provides further flexibility for formal entertaining or family gatherings. A utility room and an additional WC complete this floor.

The first floor hosts three well-proportioned bedrooms with the principal bedroom enjoying the luxury of fitted wardrobes and its own en-suite shower room, while the remaining bedrooms are served by a contemporary family bathroom.

Externally, the property enjoys an attractive position with stunning open views stretching across the surrounding landscape. The rear aspect provides a truly spectacular backdrop, offering a sense of privacy and tranquillity rarely found. To the front, a block paved driveway provides off-road parking and leads to a garage, offering excellent storage and practicality for modern family living.

Micklebring remains one of the area's most desirable villages, offering a peaceful rural atmosphere whilst remaining conveniently placed for commuters, with excellent access to the M1 and M18 motorway networks. Nearby towns and amenities are within easy reach, making this an ideal location for both family life and professional lifestyles.

This outstanding home must be viewed to be fully appreciated. Early viewing is highly recommended.

- Spacious four-bedroom detached family home offering versatile accommodation across three floors
- Stunning rear-facing lounge enjoying spectacular far-reaching countryside views
- Impressive breakfast kitchen featuring integrated appliances, central island and French doors to the garden
- Separate dining room providing additional space for family meals and entertaining
- Flexible fourth bedroom/home office ideal for modern family living and remote working
- Principal bedroom with fitted wardrobes and en-suite shower room, plus fitted wardrobes to the remaining bedrooms
- Useful utility room, laundry room, two WCs plus a garage and block paved driveway
- Sought-after Micklebring village location with excellent access to the M1 and M18 motorway networks
- Freehold / Council Tax Band F
- Early viewing is highly recommended

